



A 61-year-old man with abdominal pain for 6?months

Cheng-Hao Tseng, Jyh-Ming Liou, Kao-Lang Liu, et al.

Gut 2010 59: 147

doi: 10.1136/gut.2009.178616

Updated information and services can be found at:

<http://gut.bmj.com/content/59/2/147.full.html>

These include:

**Email alerting
service**

Receive free email alerts when new articles cite this article. Sign up in the box at the top right corner of the online article.

Notes

To order reprints of this article go to:

<http://gut.bmj.com/cgi/reprintform>

To subscribe to *Gut* go to:

<http://gut.bmj.com/subscriptions>

- National Cooperative Crohn's Disease Study. *Gastroenterology* 1976;**70**:439–44.
57. **Henriksen M**, Jahnsen J, Lygren I, *et al*. C-reactive protein: a predictive factor and marker of inflammation in inflammatory bowel disease. Results from a prospective population-based study. *Gut* 2008;**57**:1518–23.
 58. **Solem CA**, Loftus EV Jr, Tremaine WJ, *et al*. Correlation of C-reactive protein with clinical, endoscopic, histologic, and radiographic activity in inflammatory bowel disease. *Inflamm Bowel Dis* 2005;**11**:707–12.
 59. **Jones J**, Loftus EV Jr, Panaccione R, *et al*. Relationships between disease activity and serum and fecal biomarkers in patients with Crohn's disease. *Clin Gastroenterol Hepatol* 2008;**6**:1218–24.
 60. **Colombel JF**, Solem CA, Sandborn WJ, *et al*. Quantitative measurement and visual assessment of ileal Crohn's disease activity by computed tomography enterography: correlation with endoscopic severity and C reactive protein. *Gut* 2006;**55**:1561–7.
 61. **Siddiki HA**, Fidler JL, Fletcher JG, *et al*. Prospective comparison of state-of-the-art MR enterography and CT enterography in small-bowel Crohn's disease. *AJR Am J Roentgenol* 2009;**193**:113–21.
 62. **Allez M**, Lemann M, Bonnet J, *et al*. Long term outcome of patients with active Crohn's disease exhibiting extensive and deep ulcerations at colonoscopy. *Am J Gastroenterol* 2002;**97**:947–53.
 63. **Loftus CG**, Loftus EV Jr, Harmsen WS, *et al*. Update on the incidence and prevalence of Crohn's disease and ulcerative colitis in Olmsted County, Minnesota, 1940–2000. *Inflamm Bowel Dis* 2007;**13**:254–61.
 64. **Saab R**, Furman WL. Epidemiology and management options for colorectal cancer in children. *Paediatr Drugs* 2008;**10**:177–92.
 65. **Wiskin AE**, Wootton SA, Beattie RM. Nutrition issues in pediatric Crohn's disease. *Nutr Clin Pract* 2007;**22**:214–22.
 66. **Peyrin-Biroulet L**, Cieza A, Sandborn WJ, *et al*. Disability in inflammatory bowel diseases: Developing ICF core sets for patients with inflammatory bowel diseases based on the international classification of functioning, disability, and health. *Inflamm Bowel Dis*. In press.
 67. **Hyams JS**, Markowitz JF. Can we alter the natural history of Crohn disease in children? *J Pediatr Gastroenterol Nutr* 2005;**40**:262–72.
 68. **Steinhart AH**, Ewe K, Griffiths AM, *et al*. Corticosteroids for maintenance of remission in Crohn's disease. *Cochrane Database Syst Rev* 2003: CD000301.
 69. **Stange EF**, Travis SP, Vermeire S, *et al*. European evidence based consensus on the diagnosis and management of Crohn's disease: definitions and diagnosis. *Gut* 2006;**55**(1 Suppl):i1–15.
 70. **Peloquin JM**, Pardi DS, Sandborn WJ, *et al*. Diagnostic ionizing radiation exposure in a population-based cohort of patients with inflammatory bowel disease. *Am J Gastroenterol* 2008;**103**:2015–22.
 71. **Brenner DJ**, Hall EJ. Computed tomography—an increasing source of radiation exposure. *N Engl J Med* 2007;**357**:2277–84.
 72. **Rimola J**, Rodriguez S, Garcia Bosch O, *et al*. Magnetic resonance for assessment of disease activity and severity in Crohn disease. *Gut* 2009;**58**:1113–20.
 73. **Henriksen M**, Jahnsen J, Lygren I, *et al*. Clinical course in Crohn's disease: results of a five-year population-based follow-up study (the IBSEN study). *Scand J Gastroenterol* 2007;**42**:602–10.
 74. **Odes S**, Vardi H, Friger M, *et al*. Cost analysis and cost determinants in a European inflammatory bowel disease inception cohort with 10 years of follow-up evaluation. *Gastroenterology* 2006;**131**:719–28.
 75. **Odes S**, Vardi H, Friger M, *et al*. Clinical course and cost of healthcare in Crohn's disease: Markov chain analysis of a European prospectively recruited population-based cohort. *JCC* 2009;**3**:S35.
 76. **Compston A**, Coles A. Multiple sclerosis. *Lancet* 2008;**372**:1502–17.
 77. **Ebers GC**, Heigenhauser L, Daumer M, *et al*. Disability as an outcome in MS clinical trials. *Neurology* 2008;**71**:624–31.
 78. **Lichtenstein GR**, Hanauer SB, Sandborn WJ. Management of Crohn's disease in adults. *Am J Gastroenterol* 2009;**104**:465–83.

Editor's quiz: GI snapshot

A 61-year-old man with abdominal pain for 6 months

CLINICAL PRESENTATION

This 61-year-old man presented complaining of a 6-month history of intermittent abdominal fullness and dull periumbilical pain. There were no obvious aggravating factors, no radiation and no vomiting. He noticed loose stool with increased frequency of defecation about three to four times per day unrelated to eating. There was no history of previous abdominal surgery. Physical examination revealed a soft abdomen with mild distension. The initial laboratory data, including amylase, lipase and haemogram, were within normal limits. Plain abdominal radiography revealed focal dilated bowel gas over left upper quadrant. Abdominal computed tomography (CT) (figure 1) was performed. Then he was referred to our hospital for further evaluation.

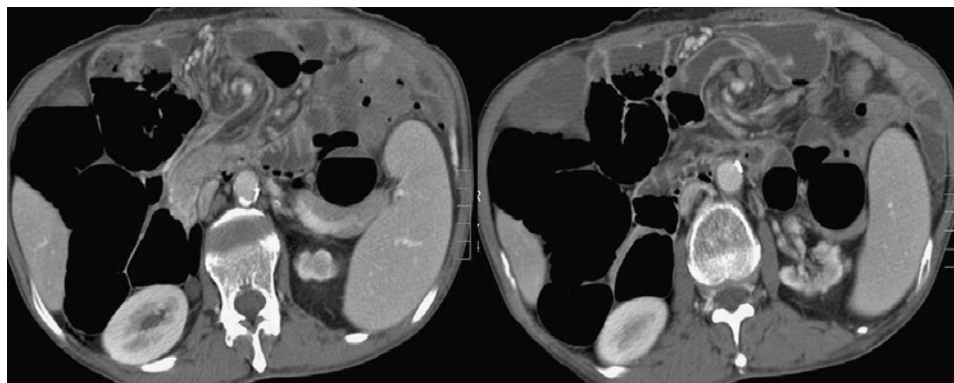


Figure 1 Two cross-sectional computed tomography (CT) images.

QUESTION

What is your diagnosis?
See page 185 for the answer.

Cheng-Hao Tseng,^{1,4} Jyh-Ming Liou,¹ Kao-Lang Liu,² Hsiu-Po Wang^{1,3}

¹Department of Internal Medicine, National Taiwan University Hospital, Taipei, Taiwan; ²Department of Medical Imaging, National Taiwan University Hospital, Taipei, Taiwan; ³Departments of Internal Medicine, National Taiwan University Hospital Yun-Lin Branch, Yun-Lin, Taiwan; ⁴Department of Internal Medicine, E-DA Hospital, Kaoshiung, Taiwan

Correspondence to Dr Hsiu-Po Wang, Department of Internal Medicine, National Taiwan University Hospital and National Taiwan University College of Medicine, No. 7, Chung-Shan South Road, Taipei, Taiwan; wanghp@ntu.edu.tw

Competing interests None.

Patient consent Obtained.

Provenance and peer review Not commissioned; externally peer reviewed.

Gut 2010;**59**:147. doi:10.1136/gut.2009.178616